



PostalWeb®



## PostalOne!® made easy

### WHY GO WITH POSTALWEB?

- Submit and monitor jobs without logging into PostalOne!
- Multi-threaded: Quickly submit multiple jobs simultaneously
- Download/print postage statements automatically
- Automate the uploading of Mail.dats and the retrieval of postage statements
- Fix files that fail validation **on-the-fly**

**Significantly reduces the time (up to 85%) and effort of submitting jobs to PostalOne! and downloading documents from the PostalOne! dashboard**

### THE ONLY SOLUTION TO AUTOMATE THE ENTIRE PROCESS:

- » **Auto-updates the MDR Client** when new releases are required by PostalOne!
- » Dramatically **reduces labor hours** needed to submit mailings to PostalOne!
- » **QuickFix™**: Easily fixes Mail.dat validation errors for resubmission
- » **Saves time** locating, retrieving, printing and organizing eDocs (UPD/FIN)
- » **Increases profitability** by giving staff time to spend on higher-level tasks
- » **Streamlines** mail production and payment processes
- » **Easily cross-train others**: No Mail.dat expertise needed
- » **Simplifies** effort required, reducing the potential for costly errors

### SAVE TIME AND MONEY BY SIMPLIFYING POSTALONE! PROCESSING:

- » No need to manually upload Mail.dat files to PostalOne!
- » No need to constantly monitor the MDR Client submission screen to check on jobs
- » No need to enter postage information into mailer billing and job shop systems
- » Download postage statements automatically with a **consistent naming convention**

### SIMPLIFIES AND STREAMLINES BUSINESS AND PRODUCTION PROCESSES:

- » View *PostalOne!* submission information from anywhere
- » Collect error information for PostalOne! Helpdesk tickets quickly and easily

**“Our very first site saved over 14 labor hours per week just by not having to manually upload jobs to PostalOne! and download finalized statements.”**

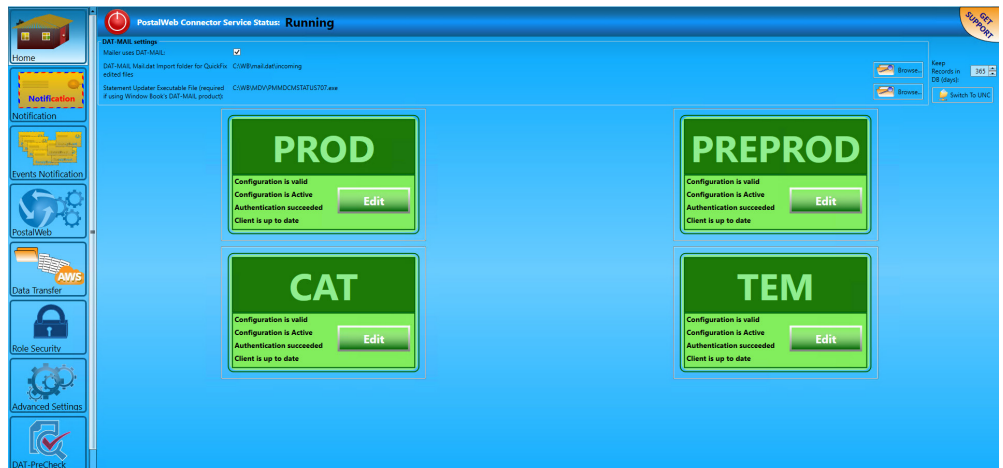
— Illinois Mail Service Provider



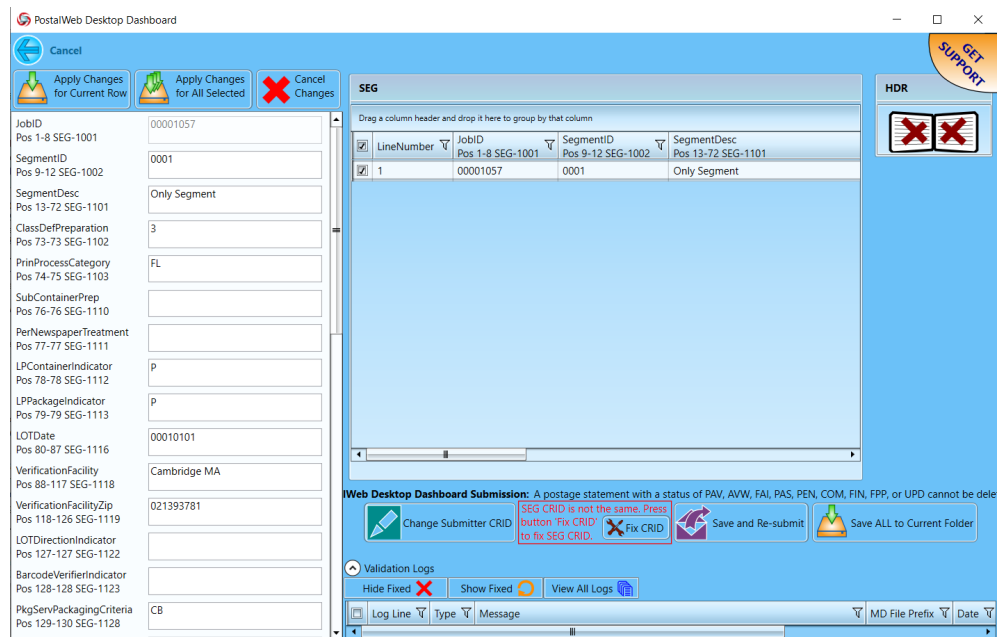
**“This resulted in a savings of \$300 per week... \$15,600 per year just by implementing PostalWeb.”**

## PostalWeb® has a powerful and easy to use interface

Monitors USPS®  
Production, PreProd,  
TEM and CAT  
environments,  
simultaneously



Integrated QuickFix™  
Mail.dat editor makes  
it easy to fix validation  
errors and quickly  
resubmit to PostalOne!



For more information on PostalWeb®, visit: [bccsoftware.com/postalweb](http://bccsoftware.com/postalweb)

